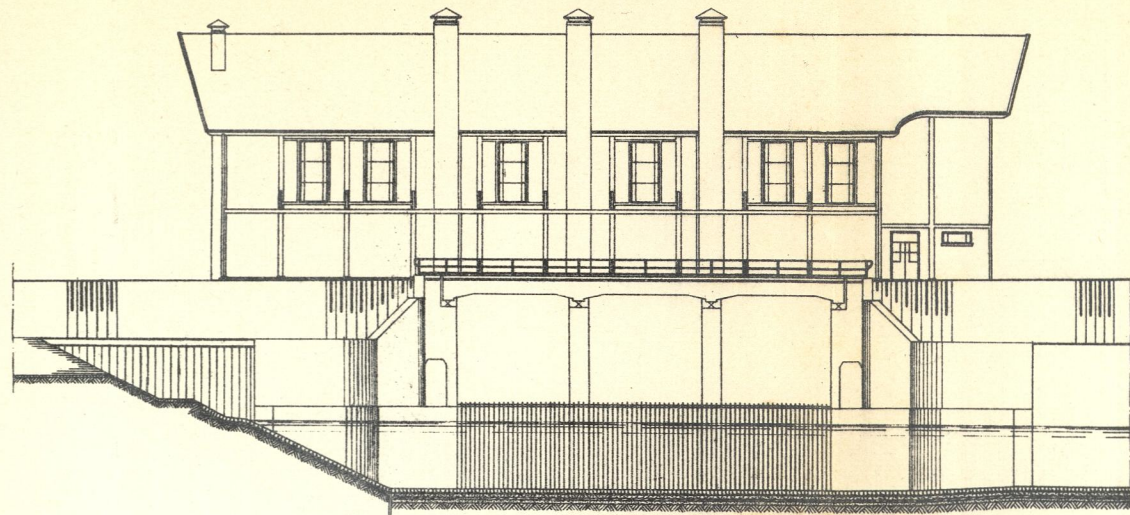
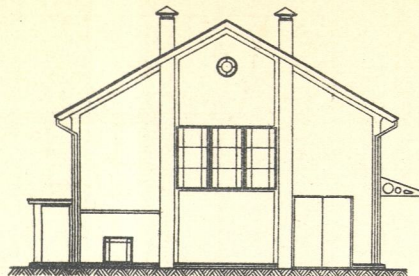


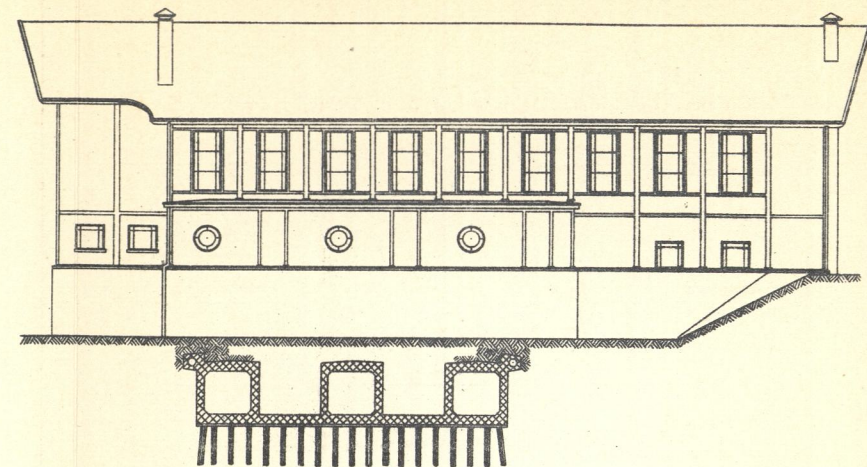
OOSTELIJKE GEVEL



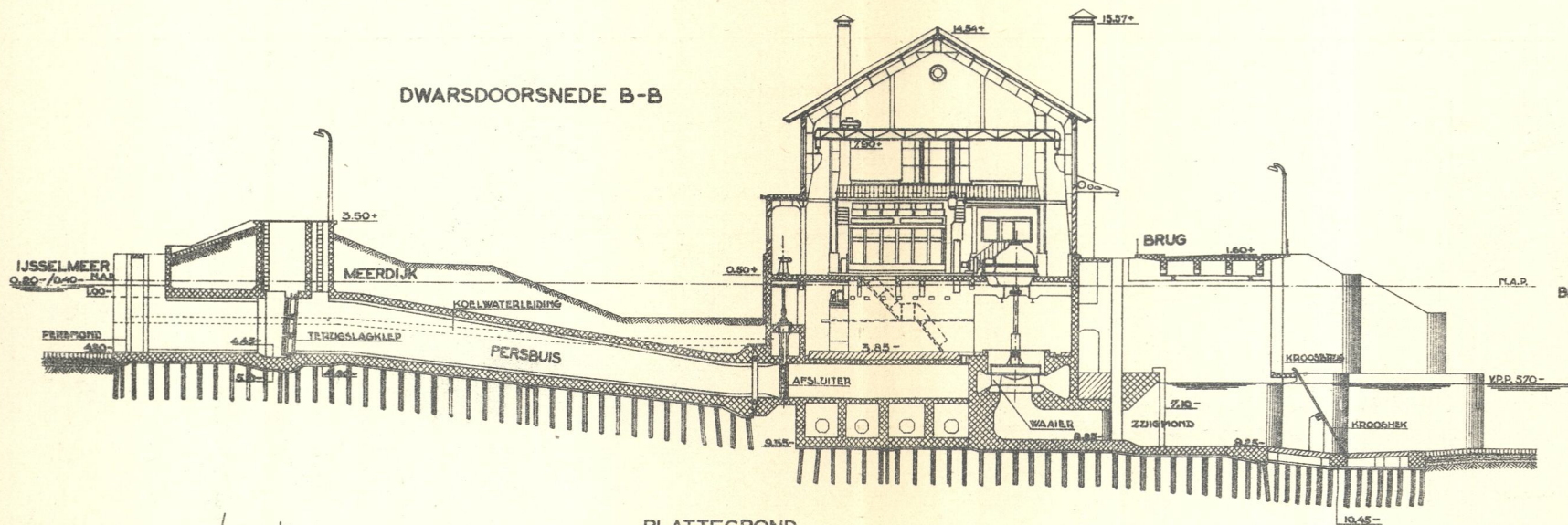
ZUIDELIJKE GEVEL



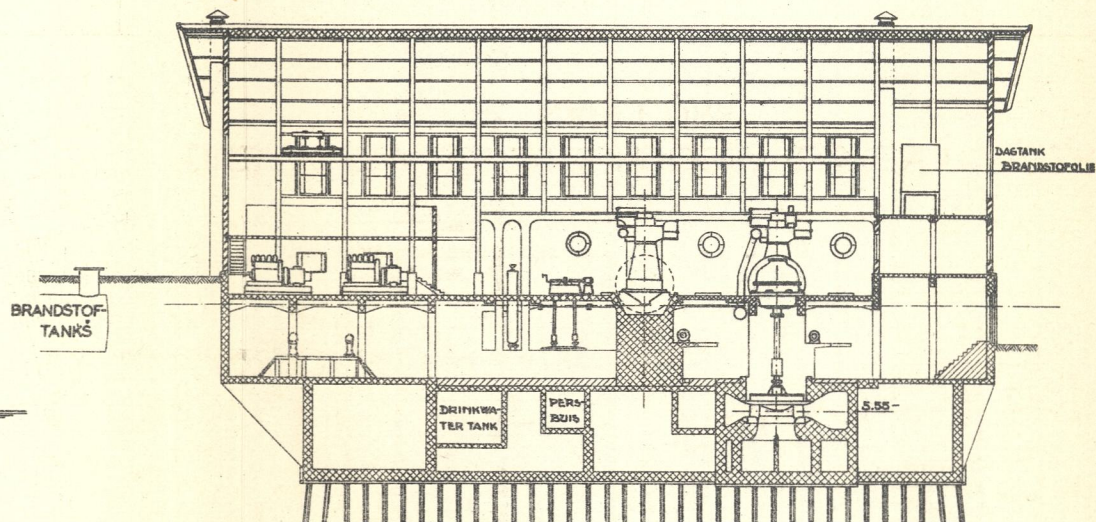
WESTELIJKE GEVEL (DOORSNEDE A-A)



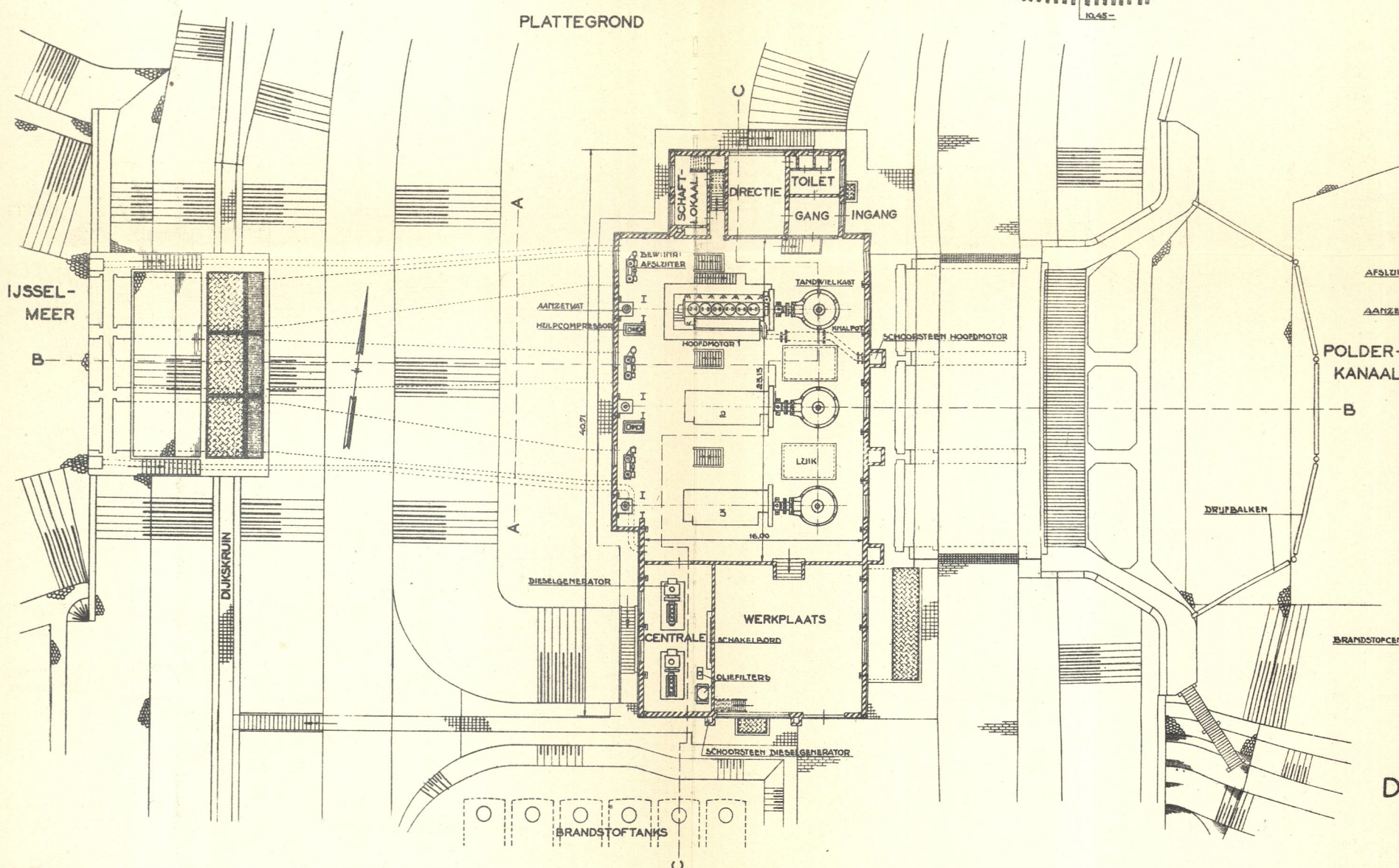
DWARSDOORSNEDE B-B



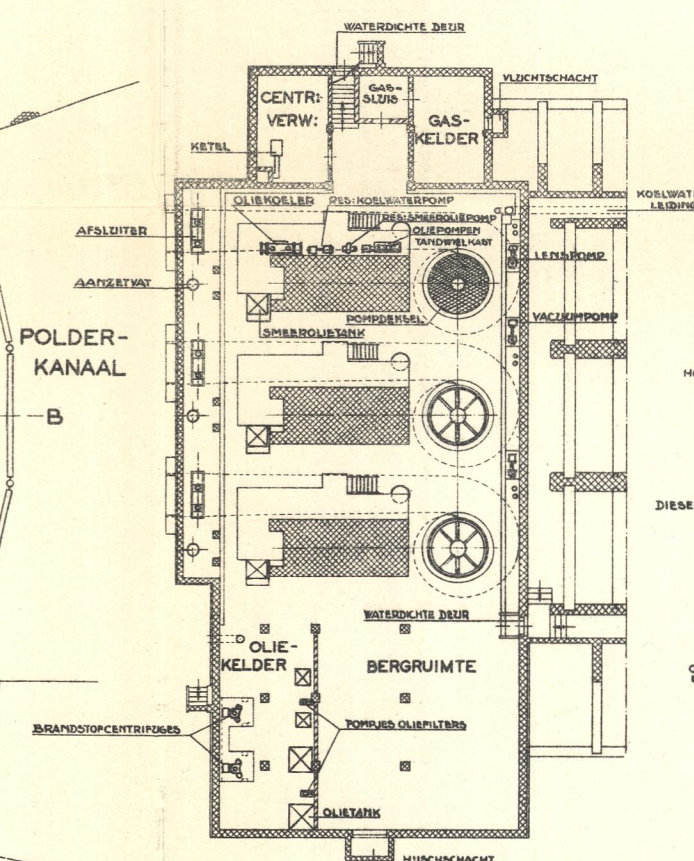
LENGTEDOORSNEDE C-C



PLATTEGROND



PLATTEGROND KELLER



HOOPMOTOR : 6 CYLINDERS DIAM. 500 M.M.
(3 ST.) SLAG 900 M.M.
NORMAAL VERMOGEN 1075 E.P.K.
NORMAAL AANTAL OMW. 170 PER MIN.
POMP : OPBRENGST 520 M³/MIN.
(3 ST.) OPVERHOOGTE 5.45 M.
NORMAAL AANTAL OMW. 85 PER MIN.
DIESELGENERATOR : NORMAAL VERMOGEN 145 P.K.

MATEN IN M.
HOESTEN TOV. N.A.R.
GEWAPEND) BETON
ONGEWAPEND)
METSSELWERK

