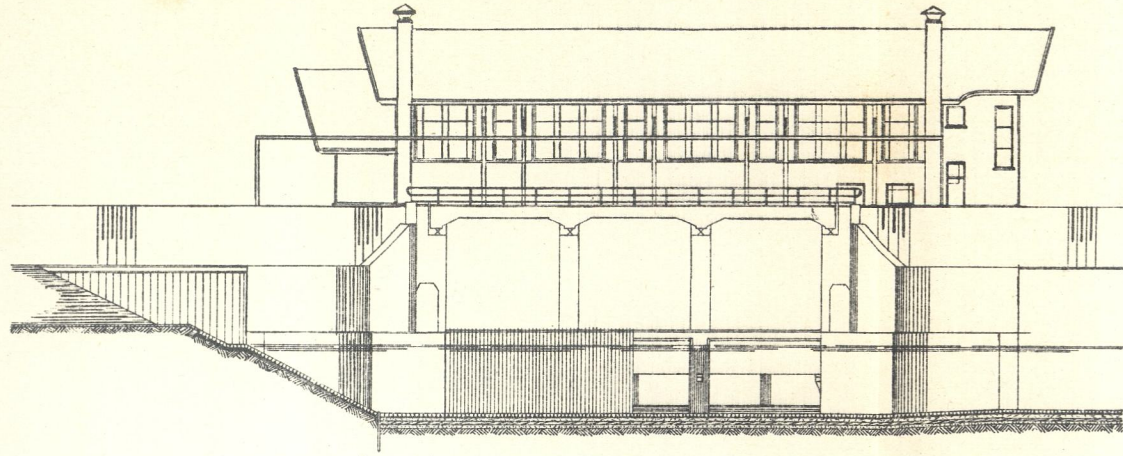
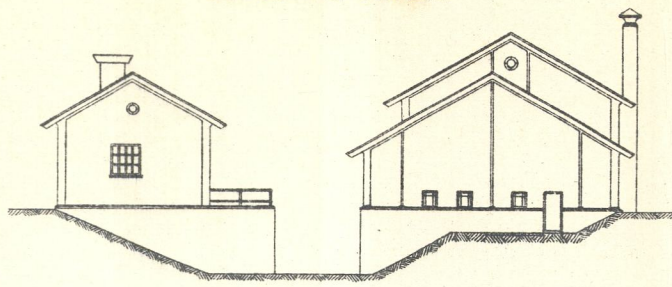


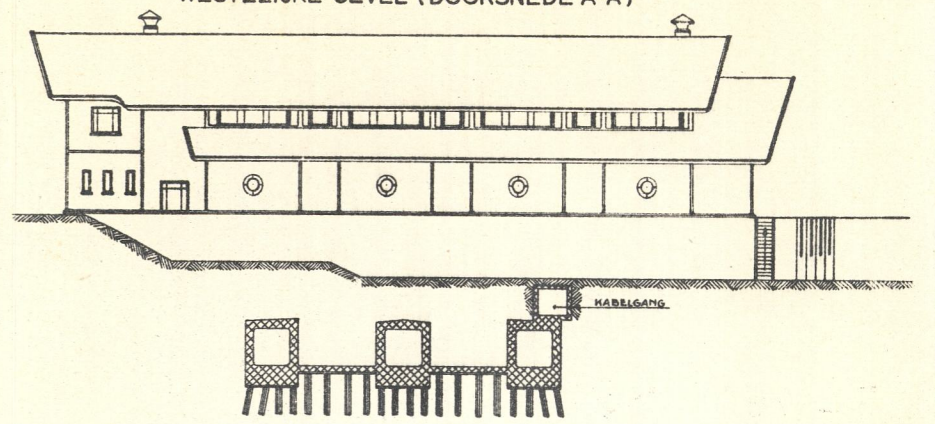
OOSTELIJKE GEVEL



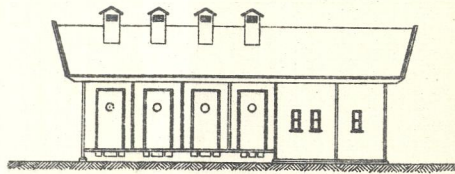
ZUIDELIJKE GEVELS



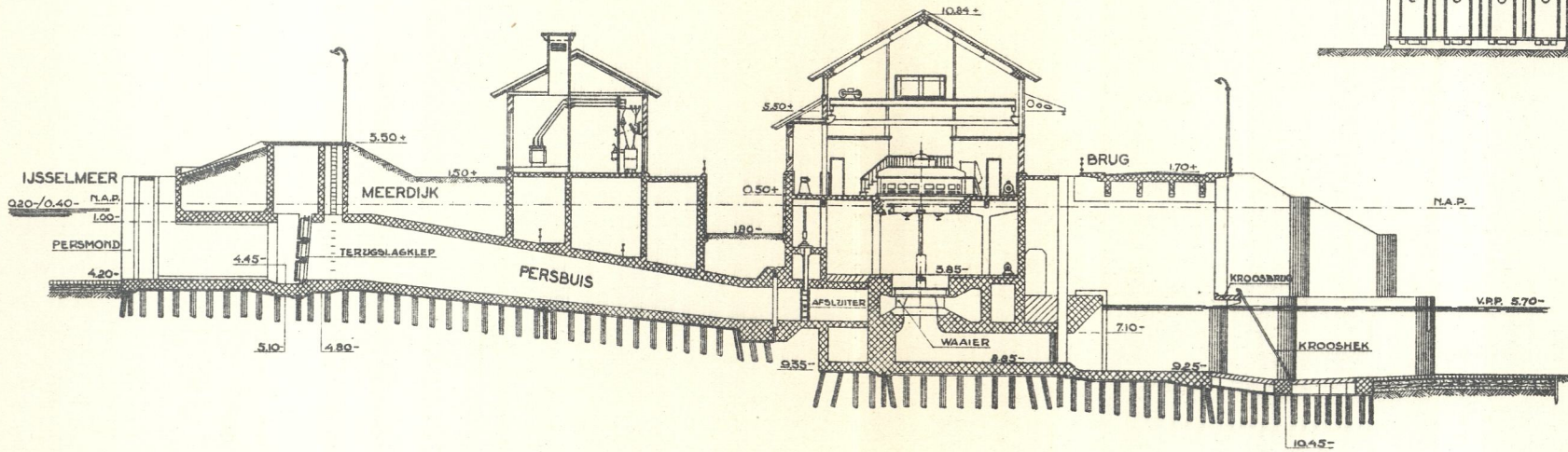
WESTELIJKE GEVEL (DOORSNEDE A-A)



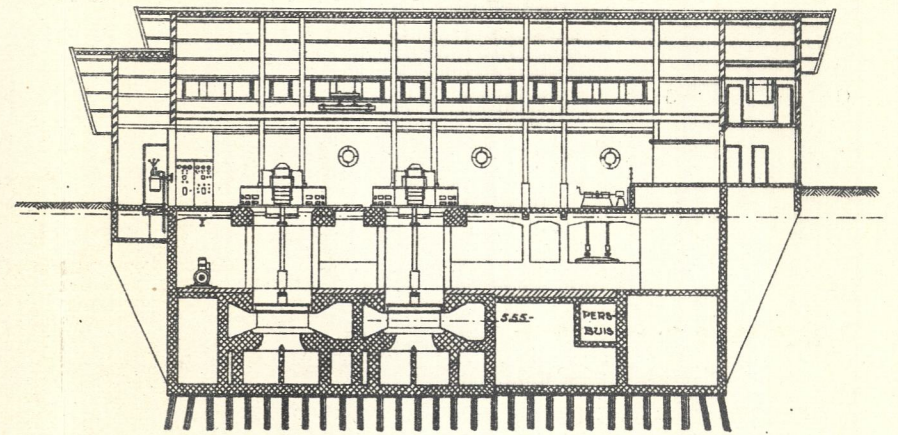
WESTELIJKE GEVEL (TRANSF:STATION).



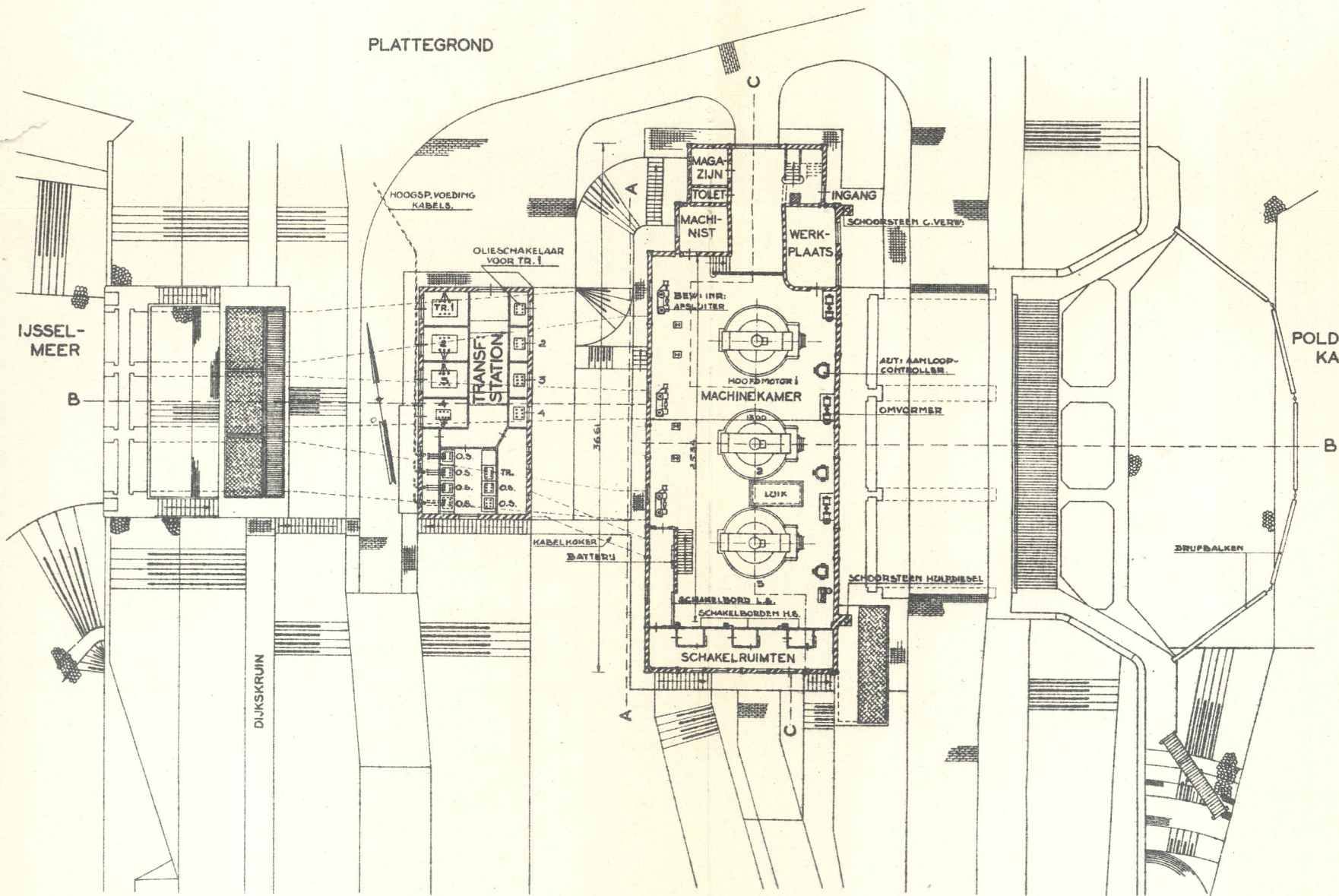
DOORSNEDE B-B



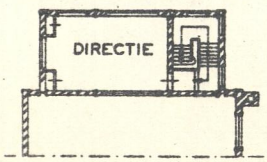
LENGTEDOORSNEDE C-C



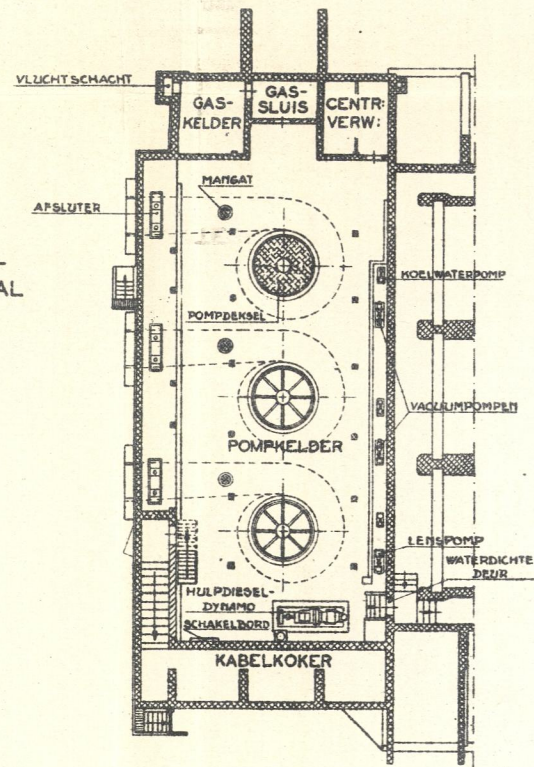
PLATTEGROND



VERDIEPING (DOORSNEDE D-D)



PLATTEGROND KELDER



- HOOPDMOTOR : SYNCHROEM ASYNCHROEM-DRAAISTROOMMOTOR 5000 VOLT
- (3 ST.)
- NORMAAL VERMOGEN 850 p.k.
- AANTAL OMW: 88 PER MIJN:
- POMP : OPBRENGST 880 m³/MIJN:
- (3 ST.)
- OPVOERHOOGTE 5,45 m.
- DIESELGENERATOR : NORMAAL VERMOGEN 72 p.k.

- MATEN IN M.
- HOOGTEN TOV. N.A.P.
- GEWAPEND } BETON
- ONGEWAPEND }
- METSELWERK }



ELECTRISCHGEMAAL
v.d. NOORDOOSTELIJKEN POLDER NABIJ LEMMER.