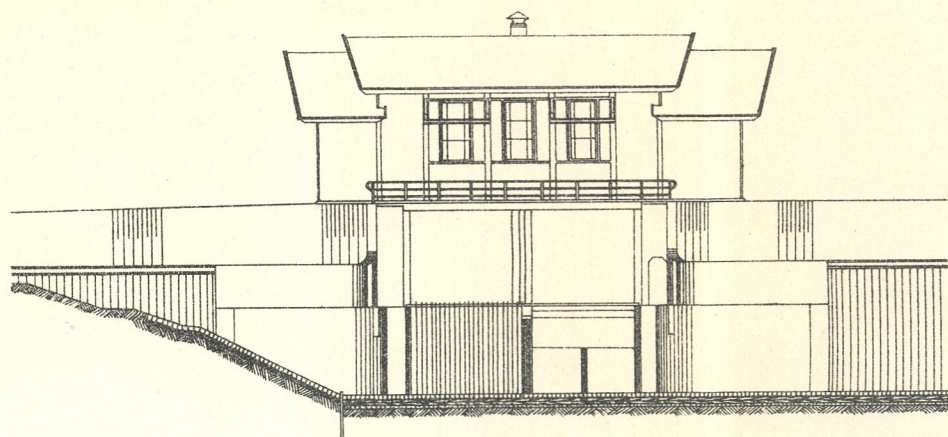
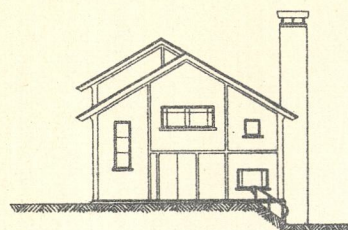


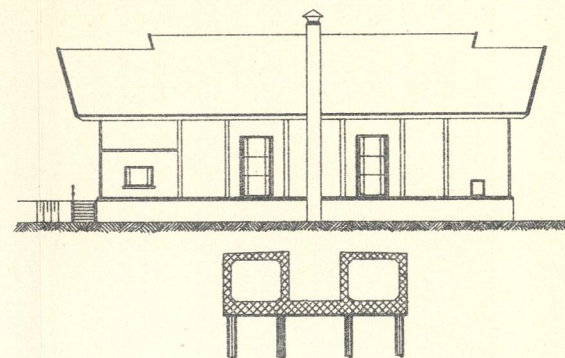
WESTELIJKE GEVEL



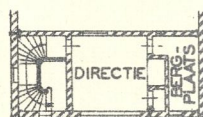
ZUIDELIJKE GEVEL



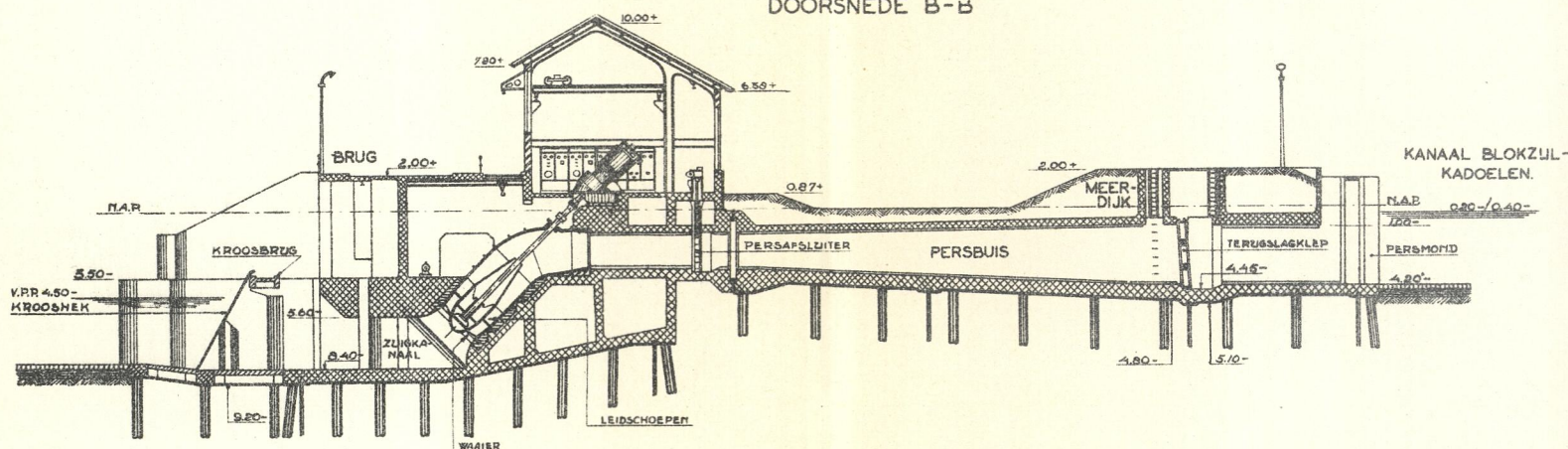
OOSTELIJKE GEVEL (DOORSNEDE A-A)



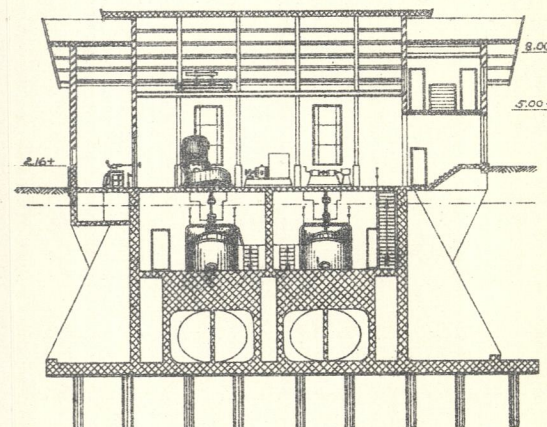
VERDIEPING



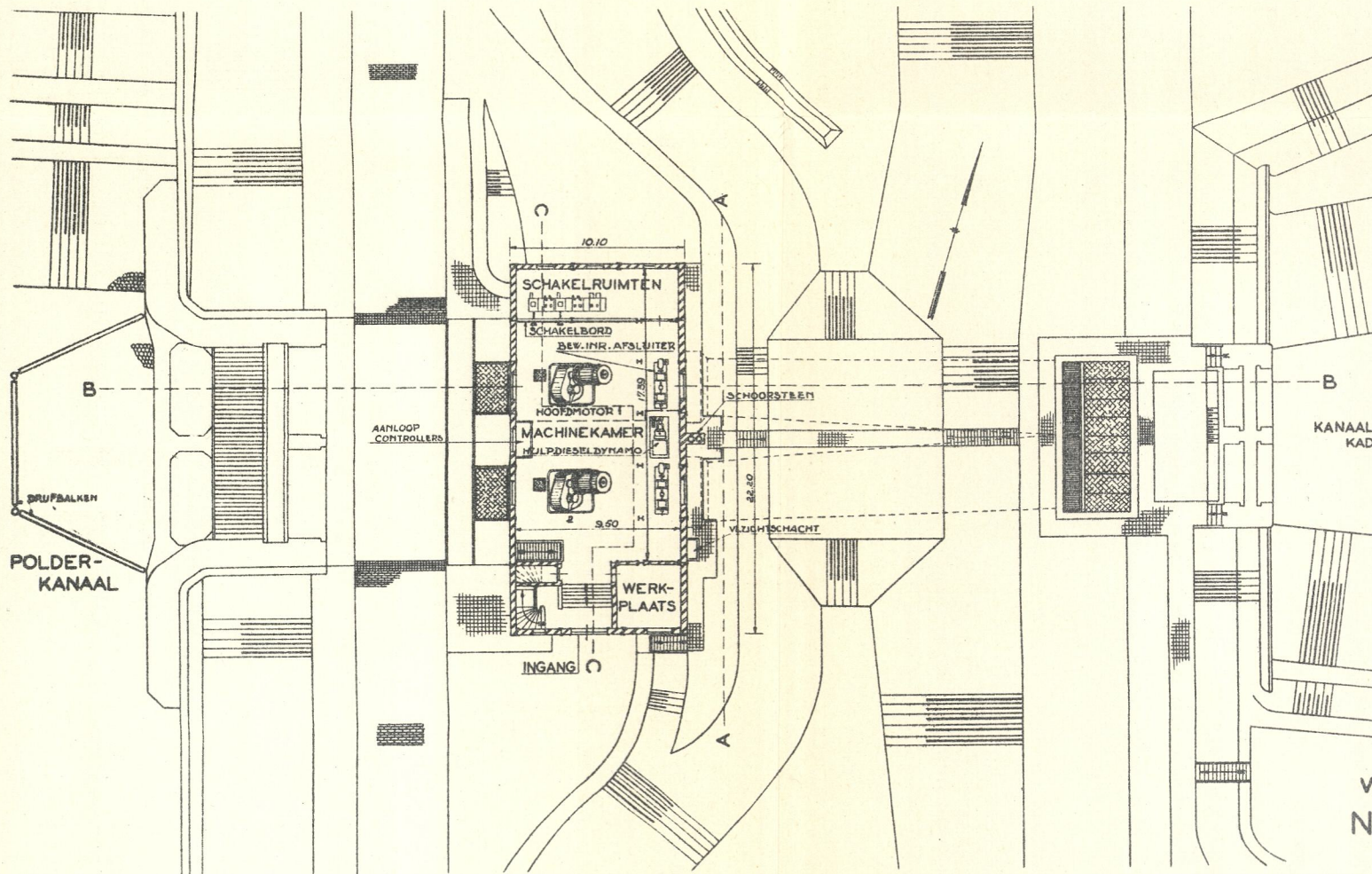
DOORSNEDE B-B



LENGTEDOORSNEDE C-C



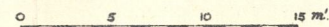
PLATTEGROND



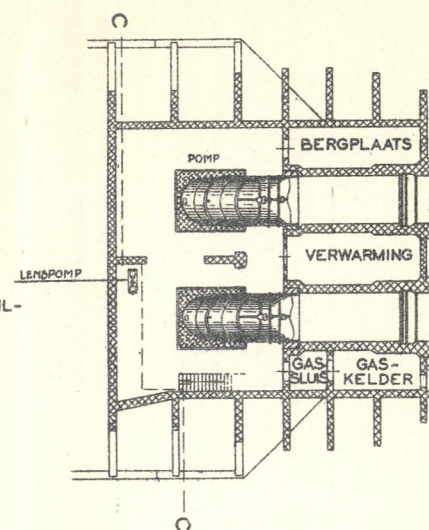
HOOFDMOTOR : ASYNCHROME DRAAISTROOMMOTOR  
(2ST) MET OLBEPRINGANKER 5000 VOLT  
NORMAAL VERMOGEN 800 pk.  
AANTAL OMW. 2 1000 PER MIN.  
POMP : OPBRENGST 600 m<sup>3</sup>/MIN.  
(2ST) OPVOERHOOGTE 4.25 m.  
AANTAL OMW. 150 PER MIN.  
DIESELGENERATOR : NORMAAL VERMOGEN 45 pk.

MATEN IN M.  
HOOGTEN T.O.V. N.A.P.  

	GEWAPEND	} BETON
	ONGEWAPEND	
	METSELWERK	



PLATTEGROND KELDER



ELECTRISCH GEMAAL  
V.D. NOORDOOSTELIJKEN POLDER  
NABIJ DE VOORST (VOLLENHOVE)